

mansaver®

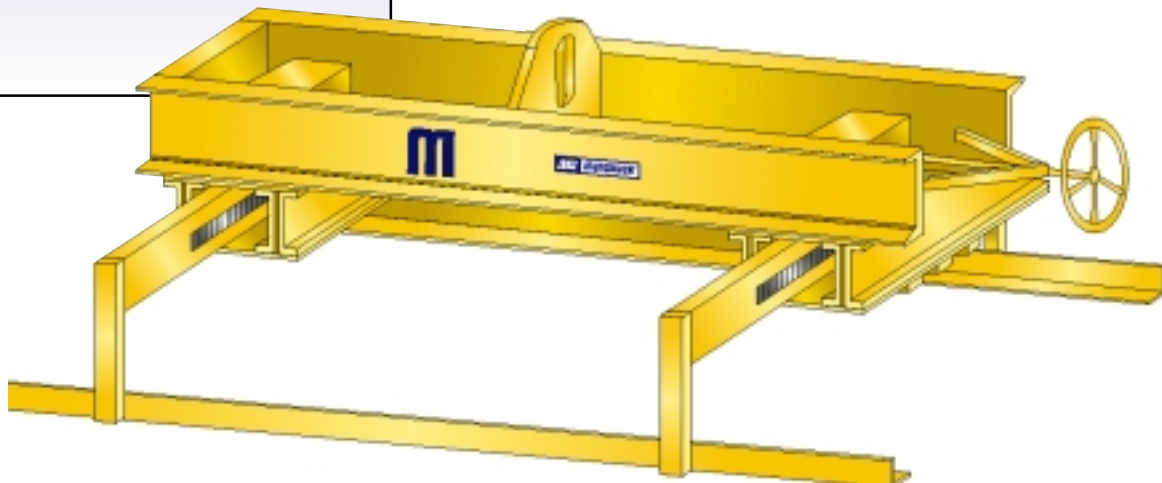
- Telescoping sheet, plate and tray lifters for any application
- Designed for safety and ease of use
- Available in any required load capacity

G1142 Sheet, Plate & Tray Lifters

G1142 SHEET, PLATE & TRAY LIFTERS

Mansaver® offers G1142 sheet, plate and tray lifters both in standard and custom designed configurations to meet the specific requirements of your application.

All ACCO G1142 lifters conform to ASME B30.20 specifications for below-the-hook lifting devices. Standard paint is ACCO safety yellow machine enamel.



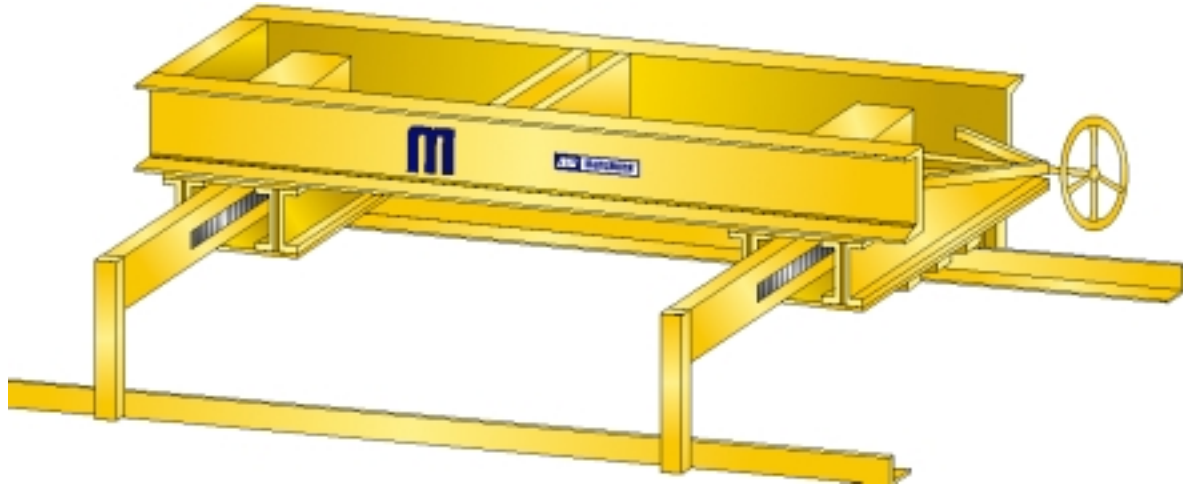
- Standard manual sheet lifter
- Handwheel, chainwheel, or motorized operation

Authorized Sales & Service
J. HERBERT CORPORATION
Call 1-800-255-0588
407-846-0588 Fax: 846-1066
info@jherbertcorp.com

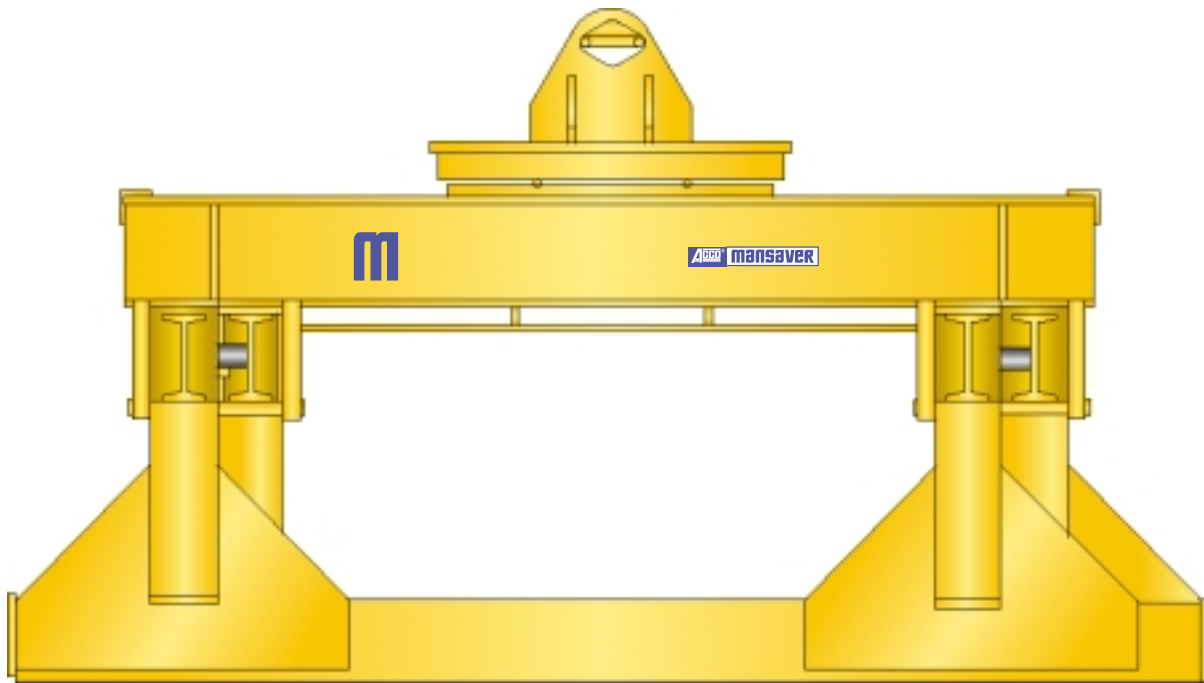
Visit us online:
www.jherbertcorp.com

ACCO® 5.2.1

G1142 Sheet, Plate & Tray Lifters

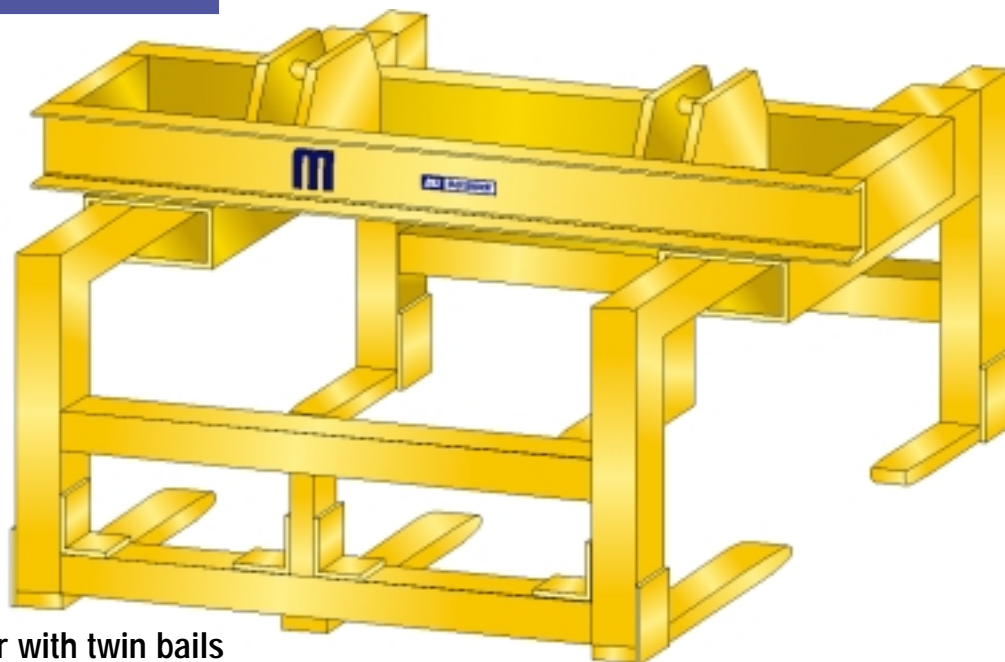


- Standard lifter with low headroom recessed bail
- Handwheel, chainwheel, or motorized operation

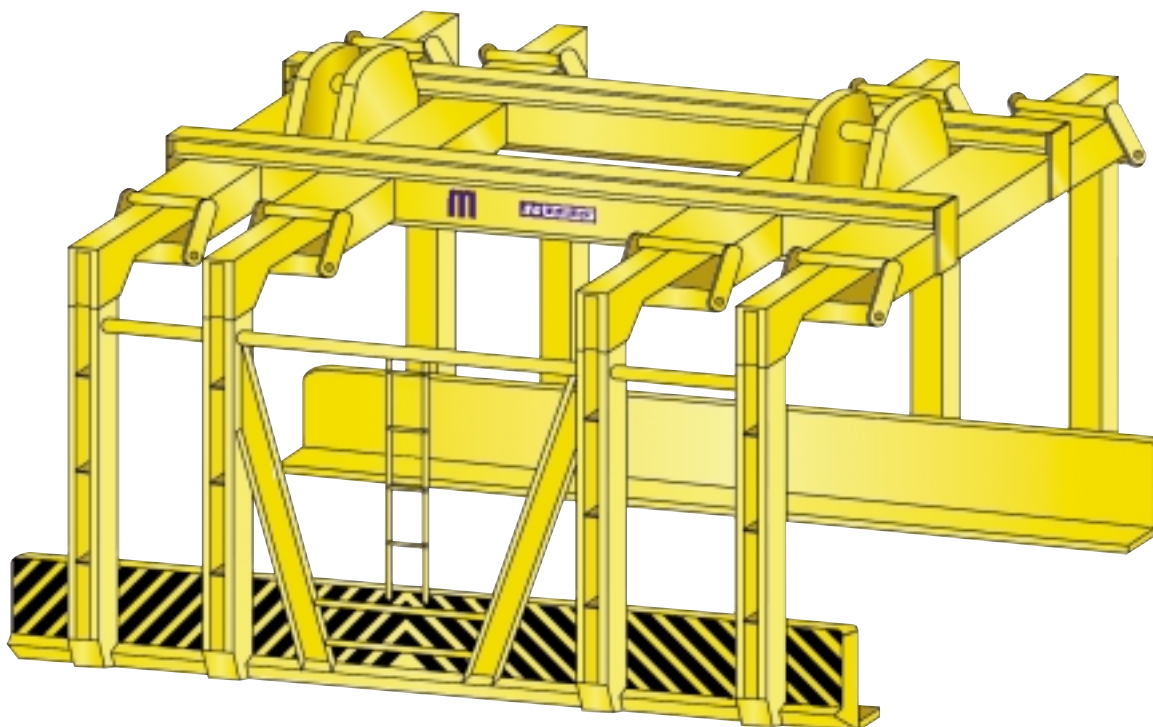


- Motorized sheet or plate lifter with powered rotation

G1142 Sheet, Plate & Tray Lifters

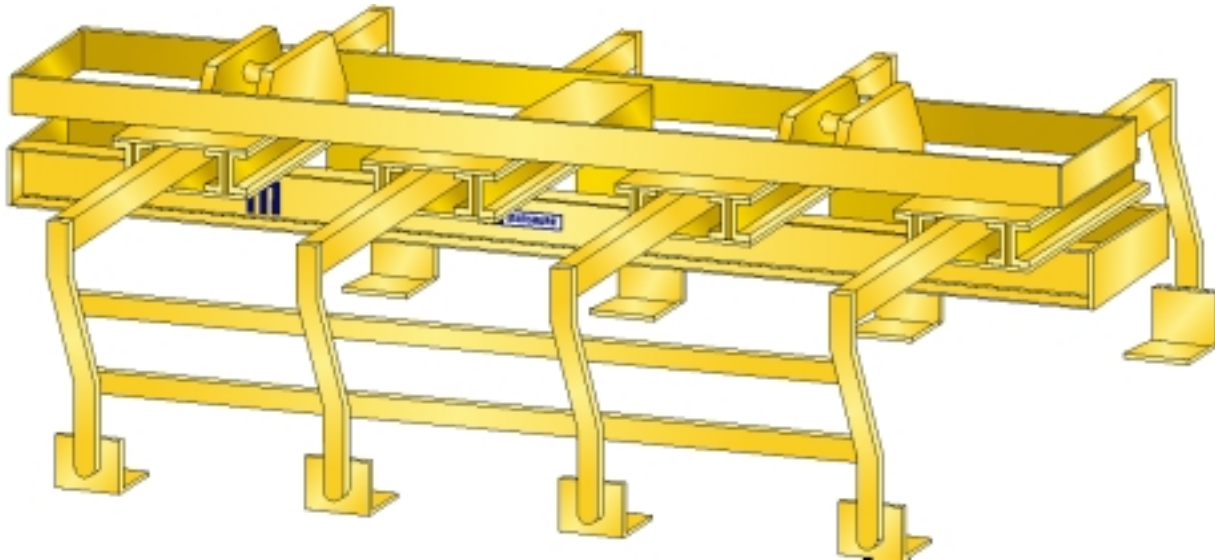


- Motorized lifter with twin bails
- Fork style lifting members

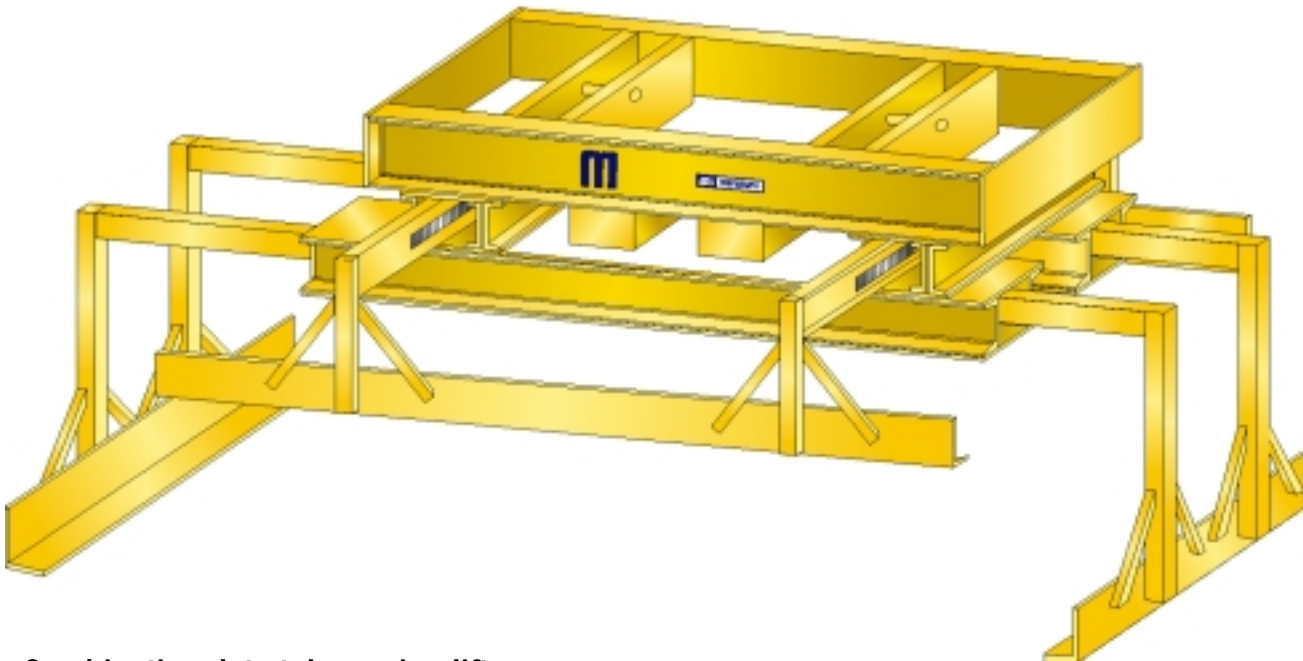


- High capacity mill tray lifter
- Lowered friction roller-style leg boxes

G1142 Sheet, Plate & Tray Lifters



- High capacity mill duty heavy plate lifter
- (8) shoe style lifting points



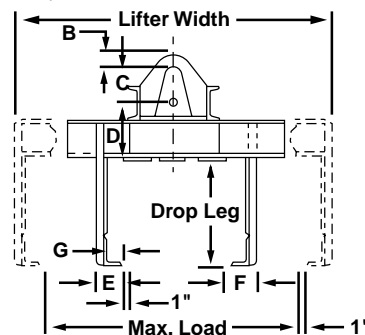
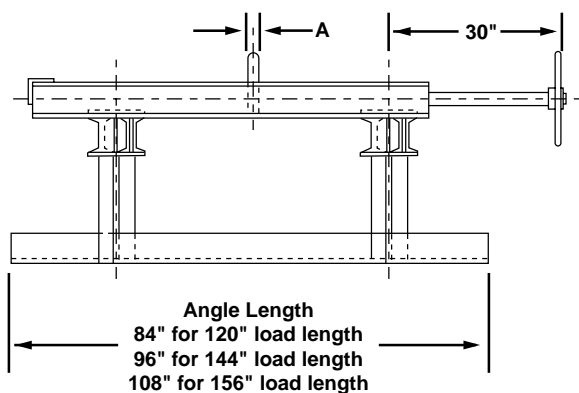
- Combination duty telescoping lifter
- Used to handle billets and billet spacer grids

Standard Headroom Sheet Lifters (Manual or Motorized)

CAPACITY	LOAD WIDTH*		LIFTER WIDTH*		DROP LEG LENGTHS AVAILABLE	CATALOG NO.	
	MIN.	MAX.	MIN. RANGE	MAX. RANGE		HANDWHEEL	CHAINWHEEL
3 TON	16	48	48-1/4	59-1/2	8, 10, 12, 15	A106375	A106381
	16	48			18, 21, 24		
	20	60	56-1/4	71-1/2	8, 10, 12, 15	A106376	A106382
	20	60			18, 21, 24		
	24	72	64-1/4	83-1/2	8, 10, 12, 15	A106377	A106383
	24	72			18, 21, 24		
5 TON	16	48	48-1/2	60	8, 10, 12, 15	A106378	A106384
	16	48			18, 21, 24		
	20	60	56-1/2	72	8, 10, 12, 15	A106379	A106385
	20	60			18, 21, 24		
	24	72	64-1/2	84	8, 10, 12, 15	A106380	A106386
	24	72			18, 21, 24		
7-1/2 TON	16	50	51	70	18, 24, 30	A120000	A120001
	16	50			36, 42		
	20	60	57	80	18, 24, 30	A120002	A120003
	20	60			36, 42		
	24	72	65	92	18, 24, 30	A120004	A120005
	24	72			36, 42		
10 TON	16	50	51	70	18, 24, 30	A120006	A120007
	16	50			36, 42		
	20	60	57	80	18, 24, 30	A120008	A120009
	20	60			36, 42		
	24	72	65	92	18, 24, 30	A120010	A120011
	24	72			36, 42		
15 TON	18	60	62	86	18, 24, 30	A120012	A120013
	18	60			36, 42		
	24	84	80	110	18, 24, 30	A120014	A120015
	24	84			36, 42		

*All dimensions shown are in inches and are approximate.

Available with carrying angles to handle maximum load lengths of 120", 144", and 156". For shorter or intermediate lengths, contact factory.



DIMENSIONS:

CAPACITY	A	B	C	D	E	F	G
3 TON	1	1-1/2	4-1/2	9-1/8	4-3/4	5-3/4	3-1/8
5 TON	1-1/4	2	5-1/2	10-1/4	5	6	3-1/8
7-1/2 TON	1-1/2	2-1/4	6-1/2	12-1/2	9	10	3-1/4
10 TON	1-3/4	2-1/2	7-1/2	11-3/4	9	10	3-1/2
15 TON	2	3	8-1/2	14-3/4	12	13	5

All dimensions shown are in inches and are approximate.

Authorized Sales & Service
J. HERBERT CORPORATION
 Call 1-800-255-0588
 407-846-0588 Fax: 846-1066
 info@jherbertcorp.com

Visit us online:
www.jherbertcorp.com

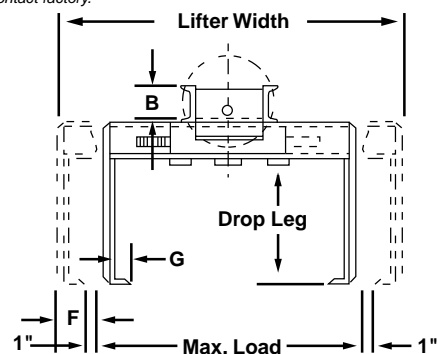
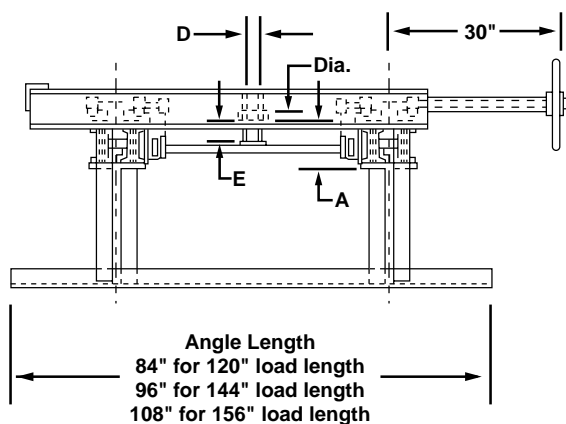
AGCO® 5.2.5

Low Headroom Sheet Lifters (Manual or Motorized)

CAPACITY	LOAD WIDTH*		LIFTER WIDTH*		DROP LEG LENGTHS AVAILABLE	CATALOG NO.	
	MIN.	MAX.	MIN. RANGE	MAX. RANGE		HANDWHEEL	CHAINWHEEL
3 TON	16	48	48-1/4	59-1/2	8, 10, 12, 15	A107550	A107556
	16	48			18, 21, 24		
	20	60	56-1/4	71-1/2	8, 10, 12, 15	A107551	A107557
	20	60			18, 21, 24		
	24	72	64-1/4	83-1/2	8, 10, 12, 15	A107552	A107558
	24	72			18, 21, 24		
5 TON	16	48	48-1/2	60	8, 10, 12, 15	A107553	A107559
	16	48			18, 21, 24		
	20	60	56-1/2	72	8, 10, 12, 15	A107554	A107560
	20	60			18, 21, 24		
	24	72	64-1/2	84	8, 10, 12, 15	A107555	A107561
	24	72			18, 21, 24		
7-1/2 TON	16	50	51	70	18, 24, 30	A120016	A120017
	16	50			36, 42		
	20	60	57	80	18, 24, 30	A120018	A120019
	20	60			36, 42		
	24	72	65	92	18, 24, 30	A120020	A120021
	24	72			36, 42		
10 TON	16	50	51	70	18, 24, 30	A120022	A120023
	16	50			36, 42		
	20	60	57	80	18, 24, 30	A120024	A120025
	20	60			36, 42		
	24	72	65	92	18, 24, 30	A120026	A120027
	24	72			36, 42		
15 TON	18	60	62	86	18, 24, 30	A120028	A120029
	18	60			36, 42		
	24	84	80	110	18, 24, 30	A120030	A120031
	24	84			36, 42		

*All dimensions shown are in inches and are approximate.

Available with carrying angles to handle maximum load lengths of 120", 144", and 156". For shorter or intermediate lengths, contact factory.



DIMENSIONS:

CAPACITY	A	B	D	E	F	G	Dia.
3 TON	6-3/4	4	1-1/2	2	5-3/4	3-18	1-1/4
5 TON	8-1/2	4-1/4	2	2-3/4	6	3-1/8	1-3/4
7-1/2 TON	11-1/2	5-1/2	2	3-1/2	10	3-1/4	2
10 TON	11-1/2	7	2-1/2	4	10	3-1/2	2
15 TON	13-1/2	8-1/2	3	4-1/2	13	5	2-3/4
15 TON*	14	10	3	4-1/2	13	5	2-3/4

* For carrying angle length of 144" or more.

All dimensions shown are in inches and are approximate.



G1142 Sheet, Plate & Tray Lifters

Selection Guide

All Mansaver® G1142 telescoping sheet, plate, and tray lifters are designed to perform specific lifting tasks in conjunction with other lifting equipment.

The lifter examples on the preceding pages and the fill-in tables below are intended

to assist in determining what lifter design is best suited to your lifting task. Please supply available application information below and submit to the Mansaver® sales department for pricing and further assistance in equipment choice.

All ACCO MANSAYER® Products meet or exceed ANSI B.30.20* for "Below The Hook" lifting devices.

All ACCO MANSAYER® Products have a one year warranty on workmanship and materials.**

* Please refer to ANSI Standards B.30.20 and B.30.9 for all lifting applications and guidelines.

** Consult the factory for further details.

LOAD INFORMATION:

Load description (sheet, plate, coil trays, other): _____

Load dimension or range of dimensions: _____

Available space under load: _____

Maximum load weight: _____

SHEET, PLATE, OR TRAY LIFTER INFORMATION:

Required lifter capacity: _____

Capacity of the hoist lifter will be used with: _____

Lifter type (sheet, plate, or tray, rotating or non-rotating): _____

Lifter suspension (single, double, sheaves): _____

(OVER)

Lifting Hoist Hook Information on reverse side

Clear Form

Authorized Sales & Service
J. HERBERT CORPORATION
Call 1-800-255-0588
407-846-0588 Fax: 846-1066
info@jherbertcorp.com

Visit us online:
www.jherbertcorp.com

ACCO® 5.2.7



G1142 Sheet, Plate & Tray Lifters

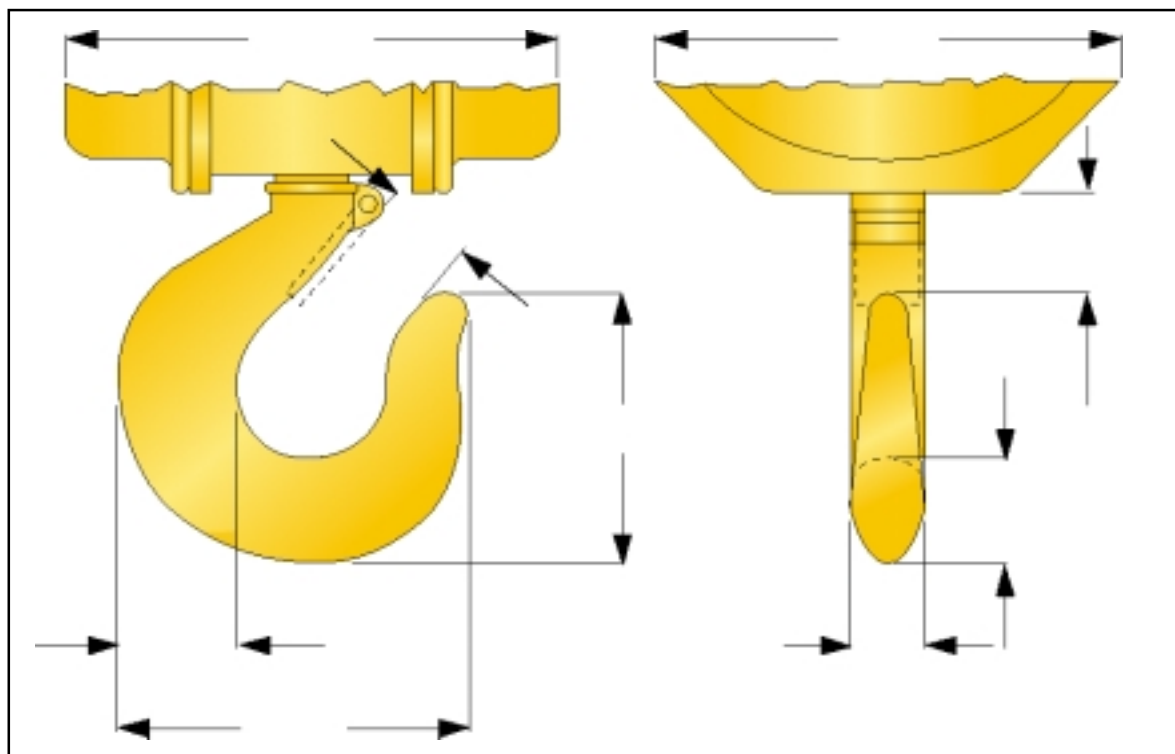
Lifter suspension centers: _____

Load suspension (carrying angles, forks, lifting shoes): _____

Options (built-in load cells, end hooks, special paint or markings, other): _____

Lifting Hoist Hook Information

(Please Fill Out Completely)



Acco® Acco Chain & Lifting Products Division
76 Acco Drive, Box 792, York, PA 17405
Telephone 800-967-7333 Fax 800-715-8897
www.accolifting.com

PART OF THE **FKI** GROUP OF COMPANIES

Acco® 5.2.8

Clear Form

Authorized Sales & Service
J. HERBERT CORPORATION
Call 1-800-255-0588
407-846-0588 Fax: 846-1066
info@jherbertcorp.com
Visit us online:
www.jherbertcorp.com

© 2000 FKI Industries Inc. 6991-00018 JGD 2M 0600 Printed in U.S.A.