

# 1200 Series PowerReel®

Authorized Sales & Service  
**J. HERBERT CORPORATION**  
Call 1-800-255-0588  
407-846-0588 Fax: 846-1066  
info@jherbertcorp.com  
Visit us online:  
www.jherbertcorp.com

The **1200 Series PowerReel®** is the best-built small spring driven cord reel on the market today. These are industrial grade, precision machines that will provide years of service with little or no maintenance.



## 1200 Series Reels are ideal for:

- Assembly and fabrication work areas
- Automotive and truck work bays
- Schools, theaters, and recreation centers
- Truck crane control cables
- Conveyors and utility trucks
- Other mobile power applications

## Standard Features

- **All-steel construction with fiberglass/nylon drum**
- **Durable yellow powder coated finish**
- **Standard versions:** Ball stop only, receptacle box, incandescent hand lamp, or fluorescent hand lamp
- **Operating Temperature Range:** -22°F to 194°F (-30°C to 90°C)

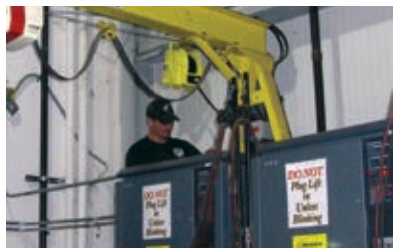
## Each 1200 Reel includes:

- **Cable:** Refer to Table A page 9 for the types of cable supplied.
- **Adjustable cable guide arm:** Can be placed at 12 possible positions to direct the cable where you need it. Includes smooth-running 4 roller guide for minimum cable stress.
- **Ratchet:** Locks the spool to keep cable at the desired extension. Can be disengaged with a pull on the cable or completely locked out for "constant tension" (stretch) applications - see page 4.
- **Adjustable ball stop:** Limits cable retraction and prevents damage to cord end accessories.
- **Precision slip ring assembly:** Provides flawless contact and long life.
- **6 foot feeder cord:** Transfers incoming power to the reel. Three conductor reel feeder cords have a three-prong molded plug.
- **Safety chain hole:** Attachment point for a safety chain when the reels are mounted overhead.
- **UL and CSA Listed:** See pages 8-9 for details. XA-121140403511

## Choosing a 1200 Series Reel

- The reels in the charts on pages 8 and 9 are sized for Lift/Drag applications, see page 4 for application descriptions.
- This reel can be used for other applications - see Specification Data Sheet on page 4.
- Cable length listed is actual length. Be sure to order enough cable. For recommendations, see "Cable Length Needed" page 5.
- **Note that slip ring #1 is permanently grounded to the reel and is used for the green ground cable conductor only.**
- If the cable needs to payout at an angle, order a **Swing-Mount Bracket** (#35087) separately.

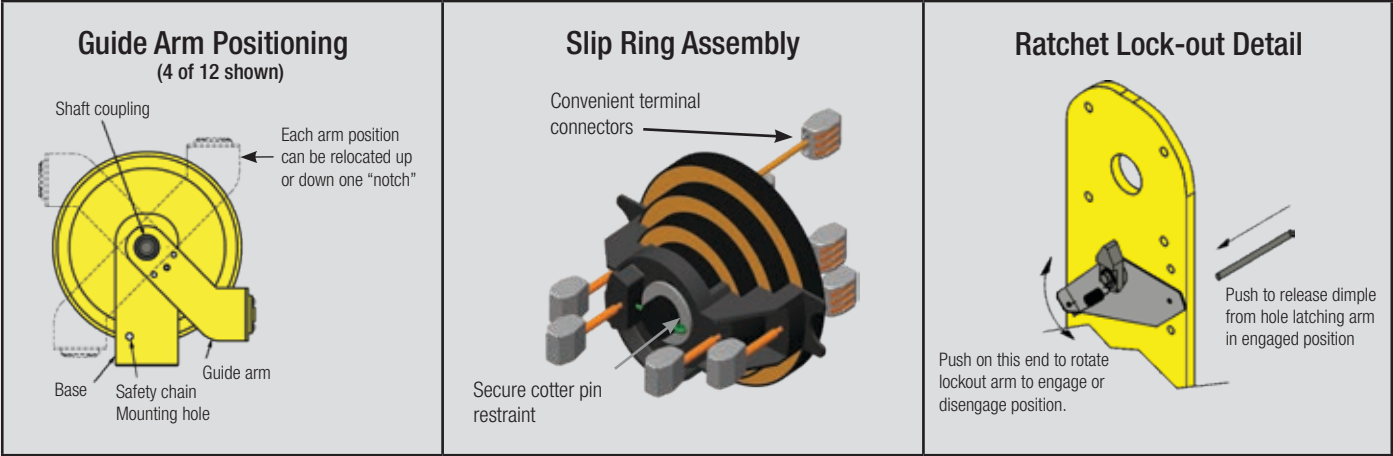
If the reel base needs to rotate, order a **Pivot Base**, see pages 13 and 24.



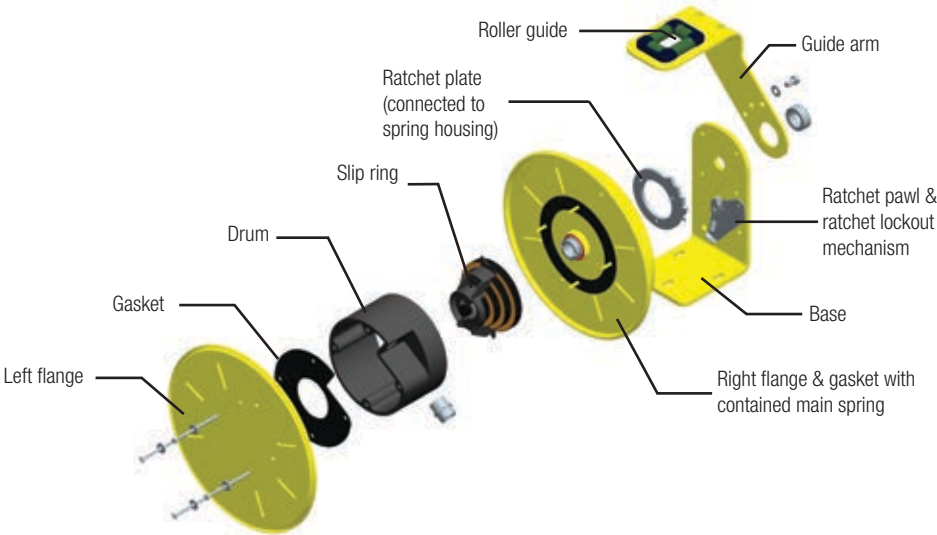
# 1200 Series PowerReel® Features

The 1200 Series PowerReel® is built with a minimum of components for maximum reliability. Unlike “consumer-grade” cord reels, this reel has all the features you require for tough industrial applications. For more information, refer to the 1200 Series PowerReel Manual on [www.conductix.us](http://www.conductix.us).

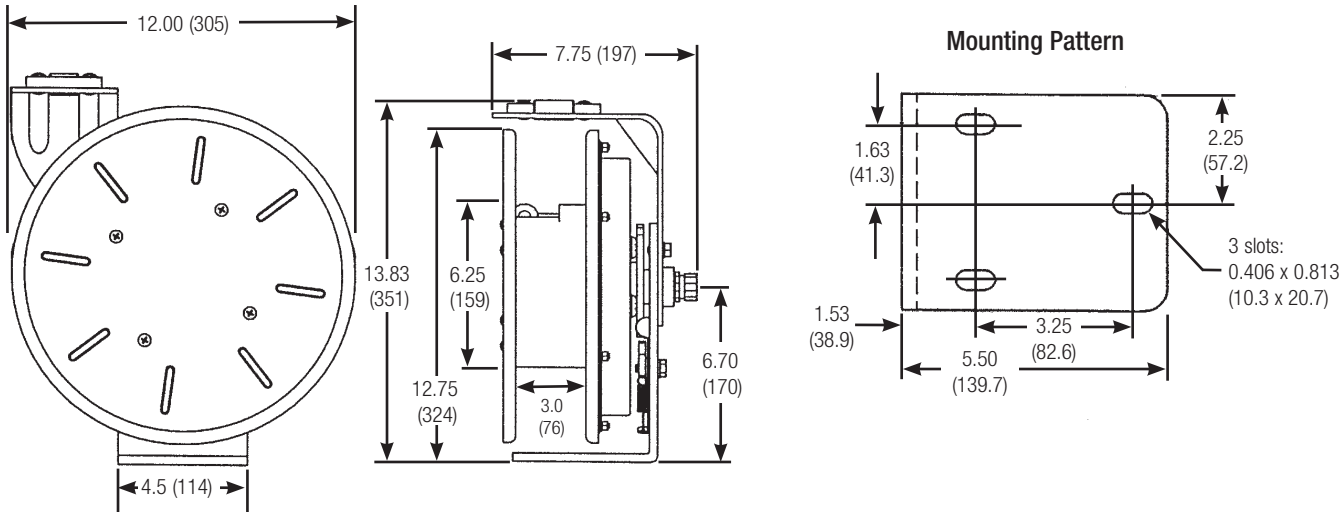
## Feature Details



## Exploded View



## Dimensions - Inches (mm)



# 1200 Series PowerReel®

## With Ball Stop Only



This reel can be used to power moving machinery or used by hand use a customer-installed cable-end accessory. If the accessory weighs over two pounds (0.9 kg), please contact the factory. Reels come with ball stop and various cable types; see Table A on page 9. Three-conductor 110 volt reels come with six foot feeder cord and NEMA 2 molded plug. Four conductor reels are rated NEMA 4 (IP56) for indoor or outdoor use.

**UL and CSA Listed** (Reels with customer installed components are NOT listed.)

AWG	# of Cond <sup>1</sup>	Max. Capacity Amps	Cable Length ft (m)	Part No. (110 or 300 Volt Reels)	Reel Max. Volts <sup>2</sup>	Part No. (600 Volt Reels)	Wt lb (kg)
16	3	10	25 (7.62)	121160302511	110	122160302511	20 (9.07)
16	3	10	35 (10.67)	121160303511	110	122160303511	21 (9.53)
16	3	10	50 (15.24)	121160305011	110	122160305011	23 (10.43)
14	3	15	30 (9.14)	121140303011	110	122140303011	24 (10.89)
14	3	15	40 (12.19)	121140304011	110	122140304011	27 (12.25)
14	3	15	50 (15.24)	121140305011	110	n/a	29 (13.16)
12	3	20	25 (7.62)	121120302511	110	122120303011	24 (10.89)
12	3	20	50 (15.24)	121120305011	110	n/a	28 (12.70)
16	4	8	35 (10.67)	121160403511	300	122160403511	22 (10.00)
16	4	8	50 (15.24)	121160405011	300	122160405011	27 (12.25)
14	4	12	35 (10.67)	121140403511	300	n/a	25 (11.34)
12	4	16	25 (7.62)	121120402511	300	122120402511	24 (10.89)
12	4	16	35 (10.67)	121120403511	300	n/a	26 (11.79)

<sup>1</sup> Slip ring #1 is permanently grounded to the reel and is to be used for the green ground cable conductor only (e.g. 4 conductor cable = green, black, white, red)

<sup>2</sup> On 110 V reels, the maximum voltage is restricted by the molded plug on the feeder cord.

## With Receptacle Box



This version of the 1200 Series PowerReel comes with a factory installed receptacle box as noted below. Boxes are yellow, heavy-duty molded TPE (thermoplastic elastomer) - oil resistant and impervious to most chemicals. Includes internal cord grip. Reels include six-foot feeder cable with molded plug - rated NEMA 2 for indoor use. GFCI (Ground Fault Circuit Interrupter) models include the GFCI as part of the plug on the feeder cord.

**UL and CSA Listed**



**# RB:** Dual 15 amp, 125 volt duplex (four outlets total) - used on 16/3 and 14/3 cables

**# RB-5-20R:** Dual 20 amp, 125 volt duplex (four outlets total) - used on 12/3 cable



**GFCI Option:** The GFCI is part of the plug on the end of the feeder cord. These reels have part numbers ending in "17".

AWG	# of Cond	Max. Capacity Amps	Cable Length ft (m)	Part No. (W/ Std. Feeder Cable)	Part No. (W/ GFCI on Feeder Cable)	Wt lb (kg)
16	3	10	25 (7.62)	121160302512	n/a	22 (10.0)
16	3	10	35 (10.67)	121160303512	n/a	23 (10.4)
16	3	10	50 (15.24)	121160305012	n/a	24 (10.9)
14	3	15	30 (9.14)	121140303012	121140303017	25 (11.3)
14	3	15	40 (12.19)	121140304012	121140304017	29 (13.2)
14	3	15	50 (15.24)	121140305012	121140305017	30 (13.6)
12	3	20	25 (7.62)	121120302516	121120302517	26 (11.8)
12	3	20	50 (15.24)	121120305016	121120305017	29 (13.2)

# 1200 Series PowerReel®

## With Incandescent Hand Lamp



This 1200 Series PowerReel comes with # HSR factory-installed incandescent hand lamp when extra lighting is required for safety and convenience. The lamp has:

- High-impact yellow handle
- Recessed on/off switch
- 15 amp / 125 volt auxiliary outlet on the side.
- All-steel, grounded reflector cage and swivel hook

The lamp requires a 100 watt rough-service bulb - bulb not included.

### UL Listed - for indoor use

AWG	# of Cond	Cable Length ft (m)	Part No.	Max Capacity Amps	Wt lb (kg)
16	3	25 ( 7.62)	121160302513	10	24 (10.89)
16	3	35 (10.67)	121160303513	10	25 (11.34)
16	3	50 (15.24)	121160305013	10	26 (11.79)
14	3	30 ( 9.14)	121140303013	15	25 (11.34)
14	3	40 (12.19)	121140304013	15	29 (13.16)
14	3	50 ( 15.24)	121140305013	15	30 (13.61)

## With Fluorescent Hand Lamp



This 1200 Series PowerReel comes with # FHL factory-installed fluorescent hand lamp when extra lighting is required for safety or convenience. The lamp has:

- Yellow rubber handle
- Recessed on/off "bump switch" on the end
- Plastic non-glare shield with cool operating 13 watt bulb included
- Feeder cord mounted ballast
- Double hanging hook

### UL Listed, for indoor use

AWG	# of Cond	Cable Length ft (m)	Part No.	Max Capacity Amps	Wt lb (kg)
16	3	25 ( 7.62)	121160302514	10	24 (10.89)
16	3	35 (10.67)	121160303514	10	25 (11.34)
16	3	50 (15.24)	121160305014	10	26 (11.79)
14	3	30 ( 9.14)	121140303014	15	25 (11.34)
14	3	40 (12.19)	121140304014	15	28 (12.70)
14	3	50 (15.24)	121140305014	15	30 (13.61)

**Table A - Cable Types Used on 1200 Series Reels**

AWG / # of Conductors	110 or 300 Volt reels		600 Volt Reels
	Cable on Spool	Feeder Cable	Cable on Spool
16/3 Cables	SOOW-A	SJT00W-A, SJ00W or SJE00W	SOOW-A
16/4 Cables	SOOW-A	SOOW-A	SOOW-A
14/3 Cables	SJE00W-A	SJT00W-A, SJ00W or SJE00W	SOOW-A
14/4 Cables	SJE00W-A	SJE00W-A	SOOW-A
12/3 Cables	SJ00W-A	SJT00W-A	SOOW-A
12/4 Cables	SJ00W-A	SJ00W-A	SOOW-A