

mansaver®

- **Powered vertical ingot grabs for all applications**
- **Designed for safety and ease of use**
- **Available in any required load capacity**

G1655 Vertical Ingot Grabs

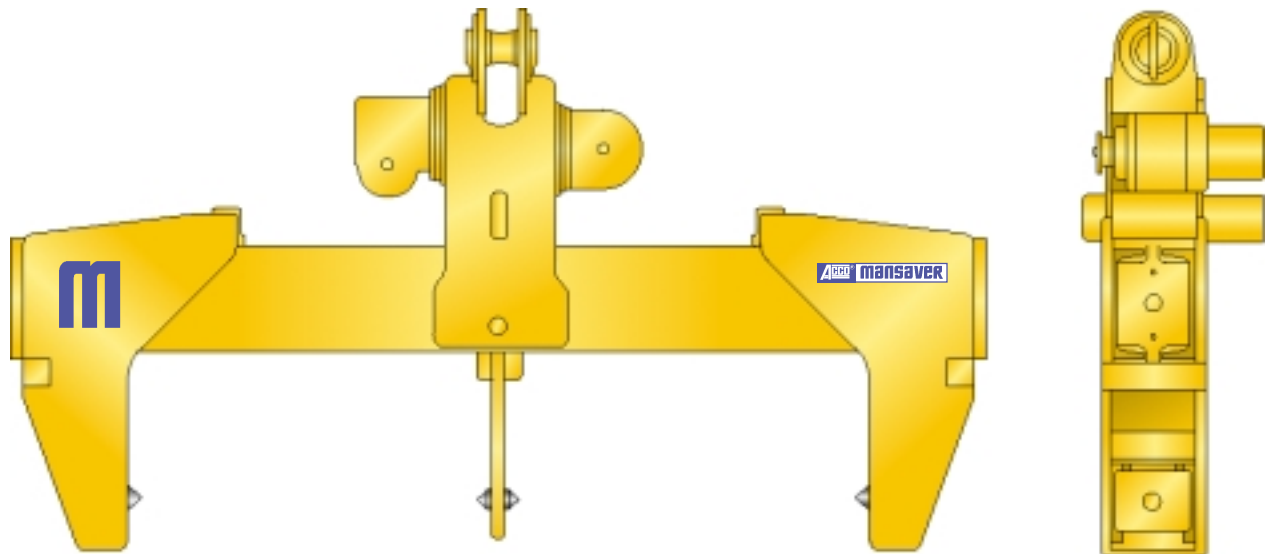
G1655 MOTORIZED VERTICAL INGOT GRABS

Mansaver® offers G1655 powered vertical ingot grabs in both standard configurations or special designs to meet the specific requirements of your lifting applications.

This style grab is specifically designed for stripping ingots from their vertical casting pits and laying them in the horizontal position. Models are available to handle both single ingots or two at a time.

This style of grab provides two distinct advantages in the handling of vertical ingots. One, the required headroom is minimal when compared to the space required to operate tong style ingot lay-down grabs; two, this type of grab can handle a wide range of ingot widths.

All ACCO lifters conform to ASME B30.20 standards for below-the-hook lifters. Standard paint is ACCO safety yellow machine enamel.



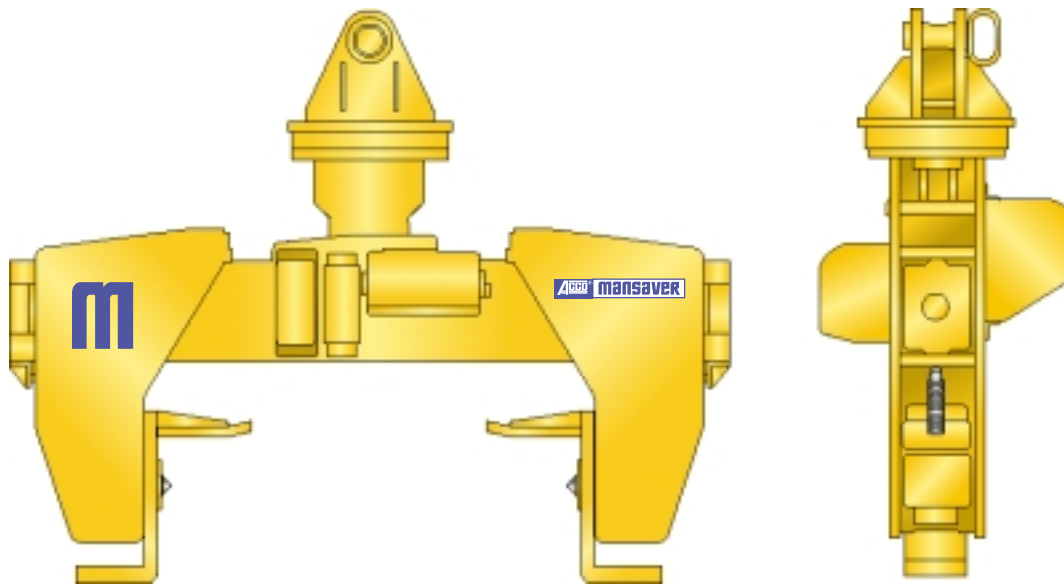
- **Center points for handling (2) ingots simultaneously**
- **Removable bail pin**

Authorized Sales & Service
J. HERBERT CORPORATION
Call 1-800-255-0588
407-846-0588 Fax: 846-1066
info@jherbertcorp.com

Visit us online:
www.jherbertcorp.com

ACCO® 6.3.1

G1655 Vertical Ingot Grabs

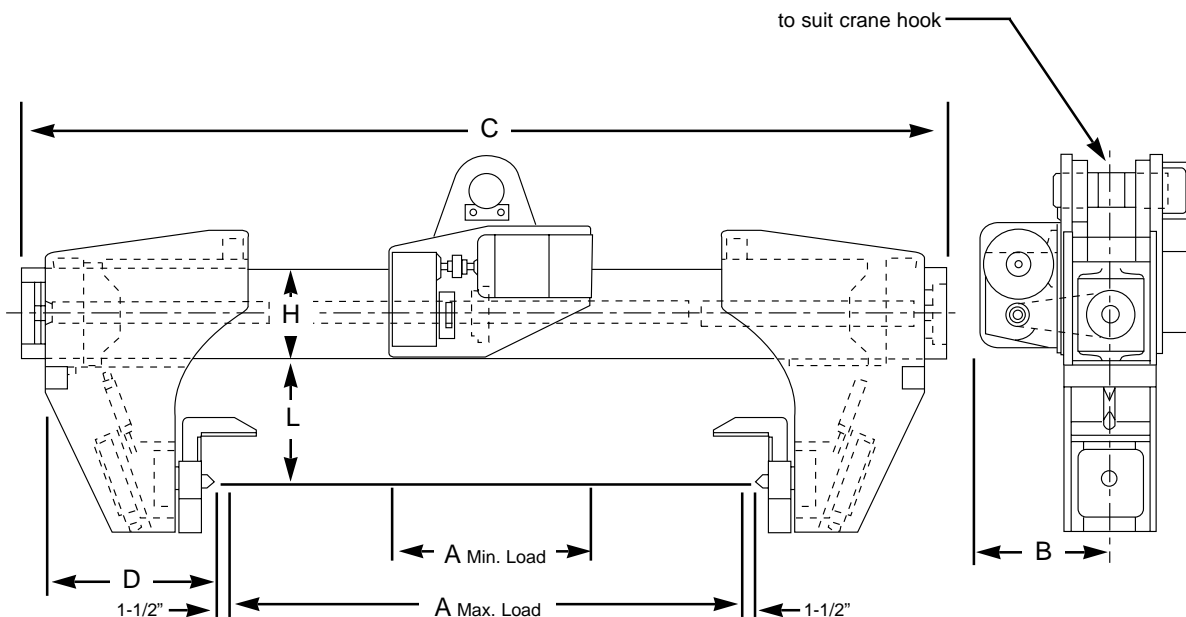


- Grab with powered rotation
- Removable pin style bail

Motorized Vertical Ingot Grabs

Capacity in Tons	Ingot Width		L	B	C	D	H	Est. wt. lbs.
	Min. A	Max. A						
7.5	30	60	15	17	95	14	12	2,500
10	30	60	15	17	100	16	12	3,000
15	30	60	15	17	104	18	13	4,000
20	36	72	16	18	122	20	13	5,000
30	48	80	20	20	144	24	24	7,000

All dimensions shown are in inches and are approximate.



Authorized Sales & Service
J. HERBERT CORPORATION
 Call 1-800-255-0588
 407-846-0588 Fax: 846-1066
 info@jherbertcorp.com

Visit us online:
www.jherbertcorp.com



G1655 Vertical Ingot Grabs

Selection Guide

All Mansaver® G1655 ingot grabs are designed to perform specific lifting tasks in conjunction with other lifting equipment. The grab examples and standard model descriptions

on the preceding pages are intended to assist in determining what style grab is best suited to your lifting application. Please supply available application information and submit to the

ACCO Mansaver® sales department for pricing and further assistance in equipment choice.

All ACCO MANSAYER® Products meet or exceed ANSI B.30.20* for "Below The Hook" lifting devices.

All ACCO MANSAYER® Products have a one year warranty on workmanship and materials.**

* Please refer to ANSI Standards B.30.20 and B.30.9 for all lifting applications and guidelines.

** Consult the factory for further details.

LOAD INFORMATION:

Load material: _____

Load size range: _____

Load temperature: _____

Maximum load weight: _____

GRAB INFORMATION:

Required grab capacity: _____

Single or double ingot lift: _____

Capacity of the hoist the grab will used with: _____

Grab suspension (pin or plate bail, other): _____

Options (locking wedge jaws, powered rotation, bail interlock switch, other): _____

Lifting Hoist Hook Information on reverse side

Clear Form

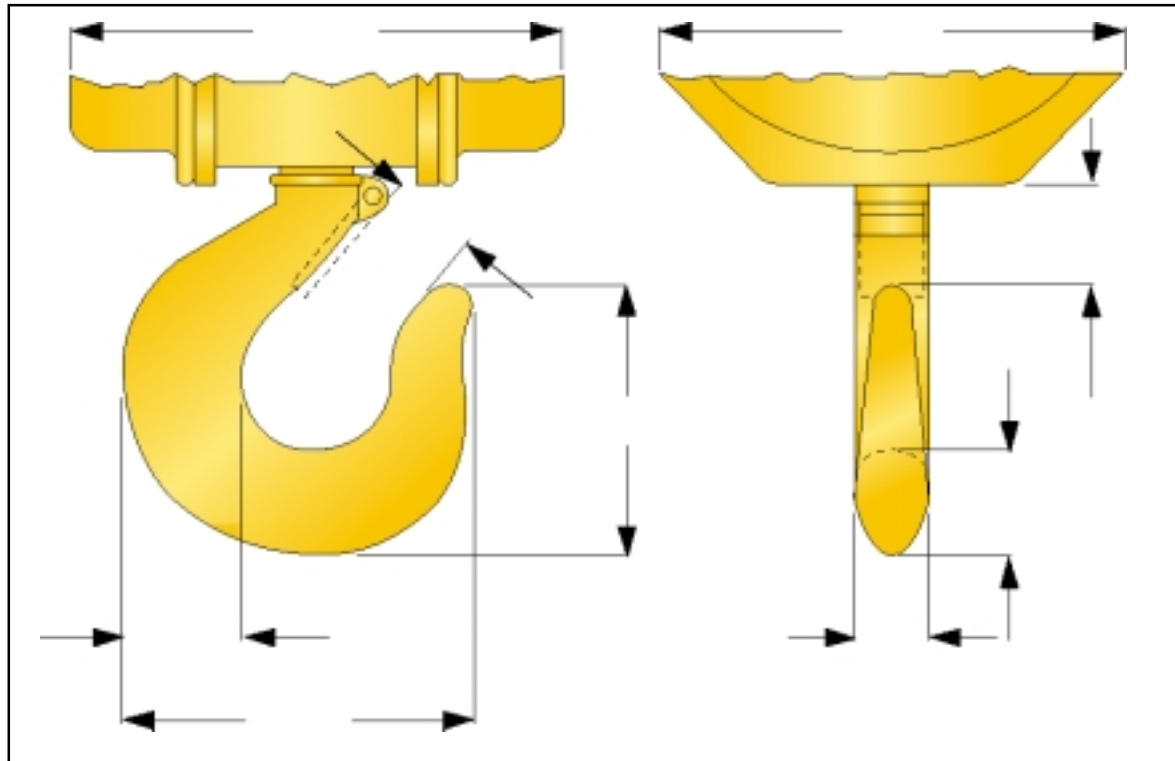
Authorized Sales & Service
J. HERBERT CORPORATION
Call 1-800-255-0588
407-846-0588 Fax: 846-1066
info@jherbertcorp.com
Visit us online:
www.jherbertcorp.com

ACCO® 6.3.5

G1655 Vertical Ingot Grabs

Lifting Hoist Hook Information

(Please Fill Out Completely)



Acco® Acco Chain & Lifting Products Division

76 Acco Drive, Box 792, York, PA 17405
 Telephone 800-967-7333 Fax 800-715-8897
www.accolifting.com

PART OF THE **FKI** GROUP OF COMPANIES

Acco® 6.3.6

Authorized Sales & Service

J. HERBERT CORPORATION

Call 1-800-255-0588
 407-846-0588 Fax: 846-1066
info@jherbertcorp.com

Visit us online:
www.jherbertcorp.com